



(206) 723-INFO

7-day access to a live senior health advocate.



KLINE GALLAND HOME • (206) 725-8800

7500 Seward Park Ave S., Seattle

Recognized as one of the finest skilled nursing facilities nationally; KGH is dedicated to comprehensive, compassionate, personalized care. Patients are viewed holistically; team of professionals cross-coordinates to meet the full spectrum of individual needs. Established in 1914, we take pride in evolving and leading the way in Long-Term Care, Short-Term Rehab and Memory Care.

THE SUMMIT at FIRST HILL • (206) 652-4444

1200 University Street, Seattle

Independent and Assisted Living community just steps from downtown shopping, theatre, cultural venues, green spaces and the finest medical facilities. Residents thrive in a dynamic, enriched lifestyle embracing Jewish culture and traditions. Elegantly appointed apartments, comfort and 24-hour security allow residents to “age in place” and enjoy *Retirement Living at Its Best*. **Memory Support now available.**

HOME CARE • (206) 805-1930

Home comfort, confidence, companionship and care. Workers are carefully screened, trained, bonded, insured and supervised. Wide range of non-medical support services are customized to make a significant difference in quality of life, health and independence...all enjoyed at home...long or short-term, ‘round the clock or a few hours each week.

HOME HEALTH • (206) 805-1930

Whether recovering from illness, surgery or accident; transitioning back to health and independence is the goal. Clients receive, *at home*, assistance of nurses, therapists, social workers and other specially-trained caregivers to maximize health and function. A physician referral initiates these Medicare-certified skilled services which are delivered with an extra dose of tender loving care.

KLINE GALLAND complies with Federal civil rights laws and does not discriminate on the basis of race, color, national origin, age, disability or sex.

Continued from opposite side ▶

FULFILLING A COMMANDMENT

Tom: Over the years, I have consciously done as much mentoring as I can. Kline Galland goes beyond any of that for anyone involved. It’s almost indescribable – Kline Galland fulfills an important covenant and commandment – *Honor thy Father and Mother*. You honor your parents in a number of different ways and times in your life – none more important than when they are in need or are unable to do it for themselves. The services Kline Galland provides are so fundamental to quality of life at important times in life. An environment you can rely on, one you can trust, from people you can trust. As I mentioned earlier, it should be the model that every organization follows – *the welcome mat is out for everyone*.

I AM BUT ONE OF MANY

Tom: Kline Galland was my focus. Yet I am but one of many. There have been – and always will be – so many people who have given so much. People I have served with who have dedicated their lives to Kline Galland – Carolyn Danz, Mike Cohen, Lilly De Jaen, Jeanie Alhadeff – people who have provided such real and meaningful guidance. I am sure we all could have put the same amount of time, effort, energy and intellect into something else. But to me, in terms of how you feel about something, it was always so great to do it. You give of yourself to Kline Galland because you want to.

Like my father before me, I know my family would agree, what I have done at and for Kline Galland is by far the most significant thing I’ve ever done – beyond anything that I have accomplished in business. I am so pleased that my son Alex, without being asked, has continued the family tradition of Kline Galland volunteering. In retrospect, my contributions over these many years will survive me by decades. In terms of what I’ve provided for the general good of the earth, I couldn’t feel better about it.



*I am so pleased that
my son Alex,
without being asked,
has continued the
family tradition.*

Right: For a number of years, Alex and Baylor have visited Kline Galland Home knowing the comfort service animals bring to residents.



We Are Living the Legacy of Caroline Kline Galland

by JEFF COHEN, CEO

Over a century ago, with the conviction and compassion like no other, Caroline Kline Galland set out to change the world of senior care. As I look around, I am humbly in awe of all that our community has accomplished in building her Kline Galland into today’s Kline Galland.

From a little house established with Caroline’s “seed money” of more than \$1.4 million (over 36 million in today’s dollars) – to the growth and evolution during the 20th and into the 21st century – our community has created a *Single-Source Senior Care Resource* like no other.

As tastes, preferences, wants and needs have changed with time, the community’s vision and support has helped us shape the future of health care:

- ▶ **Building** our Summit at First Hill for Independent, Assisted Living and Memory Support
- ▶ **Creating** a Transitional Care Unit that is the largest Rehab facility in the State
- ▶ **Establishing** the only Jewish-certified Hospice in the Northwest
- ▶ **Launching** community-based Home Health and Home Care agencies
- ▶ **Implementing** an innovative *Senior Care Resource Line* to answer questions 7 days a week

In this issue of *Chai Lites*, we are honored to highlight (no pun intended) generations of the Leavitt family. They are symbolic of the strength and support throughout our Jewish community that has made our Kline Galland your Kline Galland.

Caroline wouldn’t want it any other way.

JeffC@KlineGalland.org



Honor Thy Father & Mother

THE KLINE GALLAND CENTER
7500 SEWARD PARK AVE S.
SEATTLE, WA 98118-4256

ADDRESS SERVICE REQUESTED

Non-Profit
U.S. Postage
PAID
Seattle, WA
Permit No. 9783

VOLUME 105 - ISSUE #1 - 5779 - WINTER 2019

Chai Lites



The Kline Galland
WELCOME MAT
IS OUT FOR EVERYONE

An interview with Tom Leavitt



See Photo Credit

Passing THE BATON

Reflections of Tom Leavitt



THE AGE OF KLINE GALLAND

As Kline Galland begins our 105th year of uninterrupted service to the community, we thought it might be interesting to take a quick glimpse at how we've evolved and, at the same time, look ahead to the future of senior care. With that in mind, we recently visited with Tom Leavitt whose family connections with Kline Galland date back well into the last century. As Tom observed, "So here we are, not a completely homogeneous community. We're made up of many different families, different points of view, different histories. We have Reform, very Orthodox and Conservative. We don't worship at the same place, we don't necessarily congregate at the same place – but we do have one wonderful place the community has created and supports for our seniors to live out their lives with dignity and respect. We have this amazing mixture of people who come together not only to live at Kline Galland; but to operate it, support it, fund it and volunteer. Kline Galland is welcoming to everybody – not just every Jew, everybody. It should be the model that every organization follows: the welcome mat is out for everyone."

GROWING UP WITH KLINE GALLAND

Tom: As a child, we grew up in the Mt. Baker neighborhood with enough money to live a middle-class lifestyle, but not money to give away. We were taught that if you can't give your treasure, you give your time and your talent – as everyone has that to give. My sisters and I were always involved in one organization or another because our parents were. They both volunteered at Kline Galland – my mother was a traditional volunteer, my father helped more with committees and such.

My impression of Kline Galland at that time was its being where older Jewish people went when they needed to go into a nursing home. We knew a lot of people and relatives who lived there. For a kid, you knew it was a great place. You weren't sure exactly why, but you knew it was an important part of the community – it was spoken about with such reverence. Kline Galland was – and is – a treasure.

FROM GENERATION TO GENERATION

Tom: My father was President of Glendale Country Club in the late 1950s when it moved from Burien to Bellevue. He hired the architect, the contractor and oversaw construction. A few years later, Kline Galland asked if he would literally do the same for them – build an expanded state-of-the-art Caroline Kline Galland Home in Seward Park. It was quite a project. He agreed to do it – a Building Committee of one. For the remainder of his life he believed, without question, it was the most significant thing he had ever accomplished outside of his children. He was doing God's work. It was so important to him. It made him proud; it invigorated him; he devoted his every waking moment to making the dream a reality.

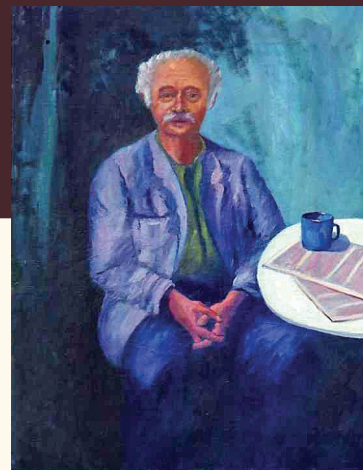
Fast forward to the mid-1970s, I am a young lawyer practicing law. I get a call from my father saying Barry Schneiderman, Arva Gray, Josh Gortler and others had called a meeting about expanding the Home again. He asked if I would attend. I did. Before the next meeting, my father says to me, "I'm too old to do this, I don't have the energy – this project is yours."

I didn't hesitate, not one second. From what I had witnessed as a kid and young adult, for what I had seen my dad do that was so meaningful – of course I would do it. We made it happen – we purchased some of the neighboring property, doubled the



Above: Tom and wife Darcy Goodman share a picture perfect moment (circa 2000). **Right:** Long before selfies, Tom's father Bob painted this nearly life-size self-portrait. **Far Left Middle:** Photo Credit: University of Washington Libraries, Special Collections, UW 36144

— “ —
**Kline Galland is
the very centerpiece
of senior care
in our community.**



capacity of the Home. I was then invited to join the Board and here we are today 40 years later. When my father passed the baton it was a huge responsibility for me. But if you look at your parents as role models, anyone would want to emulate what he had done for Kline Galland. It didn't matter how busy I was, I just did it.

ROLE REVERSAL

Tom: Like so many of our loved ones, when my mom began showing signs of dementia, she didn't think Kline Galland Home would be right for her. After all, she had volunteered there; that's where her own mother-in-law had gone. But her life improved dramatically by moving to Kline Galland from that little apartment where we were so afraid she would injure herself or start a fire – we forced the issue and did it in the nick of time. As a child of a parent going through all that, you couldn't ask for the experience to be more thoughtful or compassionate. Kline Galland put so much effort into making my mother feel at home and well cared for. The entire nursing staff was great. The love the staff exhibited was beyond words.

Quality of care, obviously, was most important. The Home had to be spotlessly clean; the staff the very best. There was nothing more important than the care for the residents and families. It's all human interaction – so you know there will be some who disagree with this or that, but it was never over the commitment of and to care. I cannot tell you how many people have said to me, "I wish my parents were Jewish so I could get that quality of care."

THE FUTURE OF SENIOR CARE

Tom: Josh Gortler was retiring as CEO at the same time my term as Board Chair was coming to a close. I chaired the nationwide search for his successor. On paper and

in person, Jeff Cohen was the superior and obvious candidate. He was the one uniquely attuned to what was coming – the future of senior care – and how Kline Galland needed to expand its service base to be even more vital and important to the community. Suffice to say, it was a great move for Kline Galland. Jeff has taken the baton from Josh and run with it. Looking back, looking around, looking ahead – Jeff has done exactly what we hoped he would do. He saw opportunities for Kline Galland that have us as the very centerpiece of senior care in our community.

STAYING AHEAD OF THE CURVE

Tom: From a hands-on perspective, I was involved with both expansion of Kline Galland Home and building the Litvin Pavilion. Then we made the decision to build The Summit retirement community on First Hill. Geographically our community had changed significantly – Seward Park was no longer the center. Kline Galland was proactive and responded accordingly. Shortly thereafter, Jeff came on board. He saw that the community actually wanted us to bring our services to them, *in their homes*. So the Board looked at expanding services. We had the core in place to do it; the systems in place; the best people in place. We were uniquely positioned to do it – and we did it. Our Community Based Services bring the next generation of Kline Galland Care to the community instead of the community having to come to us. Nobody does it better.

Health care has changed – and continues to change. Insurance companies want patients out of the hospital as soon as possible – to go to rehab. Rehab centers are becoming increasingly important, not only for economics, but for patient quality of life. For Kline Galland to be able to provide that for Jews and non-Jews alike – I am so proud that our Transitional Care unit is consistently rated among the very best.

Continued on reverse side ▶



Left: (R to L) Tom and Darcy with their children Alex and Adrien (2010) **Right:** Bob designed and raised money for the Leavitt Memorial Waterfall and Pond that greets visitors at Kline Galland Home. He wanted it to be "a quiet place where the young and old could sit together and contemplate life" - Mission accomplished.

HOSPICE CARE • (206) 805-1930

Highly specialized care maximizes every aspect of quality for individuals facing end of life. Coordinated team of health care professionals is committed to meeting the physical, emotional and social needs of patients and families. Provided wherever an individual resides, emphasis is on comfort, respect, kindness and compassion...caring for spiritual and cultural wishes as well.



PALLIATIVE CARE • (206) 805-1930

Patients battling serious illness or living with chronic disease receive consultative services to help manage and cope with symptoms. Team of specialists provides the support that enables patients to make informed medical choices, identify supportive services, reduce emergency room visits and carry-on with their daily activities. Comfort and quality of life are the primary goals.



REHAB/TRANSITIONAL CARE • (206) 805-2372

7500 Seward Park Ave S., Seattle

Inpatient and outpatient rehabilitation to get you back functioning at your best. Regarded among Washington's most popular rehab centers, care is from the same team of in-house therapists/therapeutic professionals to ensure continuity and maximize outcomes...making our Rehab/TCU the optimal place to heal on the way home.



POLACK ADULT DAY CENTER • (206) 725-8800

7500 Seward Park Ave S., Seattle • Mon. – Thurs.

Provides socialization, recreation, health monitoring and lunches for older adults...in addition to much-needed respite for caregivers. Participants benefit from activities and interaction in a supportive, supervised environment including exercise, art, discussion groups, entertainment, outings and Jewish cultural celebrations.



KLINE GALLAND FOUNDATION • (206) 456-9702

Simon Amiel, Chief Development Officer

The Foundation raises funds for endowments to generate financial support to provide quality of life and quality of care to those served by Kline Galland.

For more information, please visit
www.KlineGalland.org