

Volume 117 - Issue #2 - 5785 - Summer 2025

# *Chai Lites*

**2024 ANNUAL REPORT TO THE COMMUNITY**

*Embracing Our Future*



## OUR MISSION

A *living* commitment, inspired by *Jewish* values, to provide *exceptional* senior care by *exceptional* people...every day, in every way, for *every* one.

## OUR VALUES

At Kline Galland, we are proud to integrate the values of senior care and Jewish traditions into our core values of C.R.E.D.I.T. –

**COMPASSION • RESPECT • EXCELLENCE  
DIGNITY • INTEGRITY • TRADITION**

## TABLE OF CONTENTS

Letter from Jeff Cohen .....	4
2024 Executive Team and Board of Directors .....	5
Our Impact .....	6
Margin of Excellence .....	7
Financials .....	8
Uncompensated Care .....	9
Kline Galland Academy .....	10
Retirements .....	11
Volunteers .....	12
Exciting Things in 2024 .....	13
Embracing Our Future .....	14
Capital Campaign Donors .....	17
Gary & Karen Schwartz: A Legacy of Giving .....	18
Mother's Day Celebration .....	20
Quint Family Sensory Garden .....	22
2024 Donors .....	23

Dear Friends and Supporters of Kline Galland,

I am pleased to share with you the Report to the Community for 2024. This annual report showcases the incredible work accomplished this past year, and the impact we have delivered to residents and patients. The dedication and commitment of our staff members is the heart of our organization. Duly, the philanthropic commitments from supporters just like you make it all possible. However, our work is not done.

I would like to take this opportunity to announce the most ambitious project in Kline Galland's 111 year history, as we launch our first Capital Campaign in 25 years:

## EMBRACING OUR FUTURE

### Kline Galland's Campaign for the Next Generation of Care

Our philanthropic campaign has four defined areas of focus, all directed toward high-priority capital improvements that elevate our physical environment, equipment, and state-of-the-art technology that residents and patients in a modern senior care operation deserve. Through a significant investment in our facilities, this \$30 million campaign will set the standard for senior care—helping our families and neighbors continue to age with dignity. This investment is what they deserve, it's what our community needs, and one day—it's what we'll all want for ourselves.

On page 17, you can see the incredible support already garnered for our campaign. We will need every person's help to realize our goal, and I am filled with every confidence that our community will rally around this need, aligned with the shared goal of securing our future.

If you would like to discuss how you can participate in this campaign or to simply learn more, please feel free to contact me, or our Chief Philanthropy Officer, Nate Nusbaum, at (206) 456-9702.



**Jeffrey D. Cohen**  
Chief Executive Officer



## 2024 EXECUTIVE TEAM

**JEFFREY D. COHEN**  
Chief Executive Officer

**MIN AN**  
Chief Operating Officer

**TRACEY GROSCOST**  
Chief Financial Officer

**NATHAN NUSBAUM**  
Chief Philanthropy Officer

**SHELLY RYAN**  
Chief of Human Resources

**ERIN SHERIDAN**  
General Counsel/  
Chief Compliance Officer

## 2024 BOARD OF DIRECTORS

Robert Simon, Board Chair

Emily Alhadeff

Jeanie Alhadeff\*

Jack Almo\*

David Benoliel\*

Marc Bridge

Michael Cohen\*

Lynn Du Bey

David Fain

Irene Fisher\*

Barry Goren

Mark Kane\*

Alvin Martin\*

Rabbi James Mirel

Michael Morgan\*

Jeff Piha

Brian Quint\*

Jay Riffkin

Doug Rosen\*

David Shapiro

Allan Steinman\*

Barbara Sulman

Doug Wiviott

Elana Zana

\*past presidents

Be sure to visit our website at [www.KlineGalland.org](http://www.KlineGalland.org)

## OUR IMPACT

Our **Continuum of Care** encompasses a wide range of services provided by Kline Galland. These services span three distinct lines: Kline Galland Home in Seward Park, Mary Schwartz Summit on First Hill, and Benaroya Community Services, which delivers care directly to individuals in their homes.

### 2,735 RESIDENTS & PATIENTS KLINE GALLAND CARED FOR IN 2024

141 RESIDENTS AT MARY SCHWARTZ SUMMIT

1,015 PATIENTS AT KLINE GALLAND HOME

1,579 PATIENTS THROUGH  
BENAROYA COMMUNITY SERVICES

## MARGIN OF EXCELLENCE

At Kline Galland, we believe that quality care should be the standard. That is why we invest in programs we know improve quality and experience so that each patient is treated with dignity and respect. This includes investing more to maintain the highest levels of excellence in care, resident life, and Jewish tradition. What we call the **Margin of Excellence**, these services and programs are made possible by the philanthropic commitment of our community of donors.

### \$6,569,040 MARGIN OF EXCELLENCE

\$4,640,000 NURSING STAFF  
(above state average)

\$766,000 SUMMIT RESIDENT SUBSIDY

\$651,000 KOSHER FOOD PREMIUM

\$290,000 MARKETING & COMPLIANCE

\$114,000 VOLUNTEER & ACTIVITY MANAGEMENT

\$85,000 RABBINIC SERVICES

\$18,000 CNA PROGRAM

\$5,040 KOSHER MEALS ON WHEELS



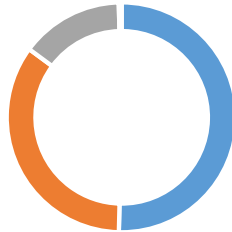
# 2024 FINANCIALS

## TOTAL EARNED REVENUE BY TYPE

- 35.9% ■ Government
- 24.7% ■ Private Pay
- 10.3% ■ Insurance
- 0.3% ■ Other

**\$68,196**

(in thousands)

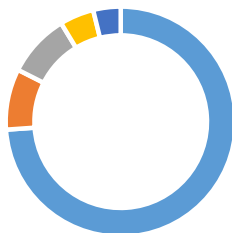


## EXPENSES BY CATEGORY

- 73.9% ■ Salaries/Taxes/ Benefits
- 8.5% ■ Occupancy
- 8.9% ■ Supplies/Other
- 4.8% ■ Direct
- 3.9% ■ Food

**\$70,917**

(in thousands)

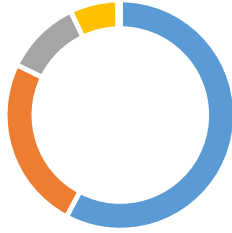


## EARNED REVENUE BY SERVICE LINE

- 57.6% ■ Skilled Nursing
- 24.4% ■ Benaroya Community Services
- 10.7% ■ Assisted Living
- 6.7% ■ Independent Living
- 0.4% ■ Other

**\$68,196**

(in thousands)



# UNCOMPENSATED CARE

In 2024, \$1.2 million in uncompensated care was required to bridge the gap between the cost of providing the highest standard of care and Medicaid's reimbursement, which covers 93% of the costs. The true cost of Kline Galland's high standard of care is \$495 per day.

Healthcare reimbursements have plateaued even as the expenses of senior care continue to rise, especially given the significant increase in the elderly population over the next fifteen years.

Kline Galland's commitment to **delivering exceptional care** to every senior within our continuum is upheld through the generosity of donors. No matter the size of your donation, it will play a vital role in delivering the invaluable treasures of care, dignity, and spiritual support to our elderly community.

**\$1.2M** The difference Kline Galland faces each year in uncompensated care that is delivered through philanthropy

- Kline Galland receives from Medicaid: **\$458.67**
- Funding Difference: **\$36.34** per resident per day



# KLINE GALLAND ACADEMY

Since 2019, Kline Galland Academy has provided students with the opportunity to earn their Nursing Assistant Certification through a four-week, hands-on training program, preparing them for meaningful careers in senior care.

Looking ahead, we are excited to expand our program in 2025, with a goal of offering three classes—potentially four—to train and welcome more skilled caregivers into the Kline Galland family and our community.

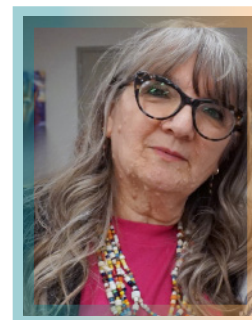
In 2024  
we hosted **2** graduating  
classes with a total of **16** graduates



# RETIREMENTS

At the heart of our organization is the dedicated and enthusiastic staff delivering care and services every day. We are honored to celebrate the long, fulfilling careers of our Kline Galland employees, and thank them for their years of service.

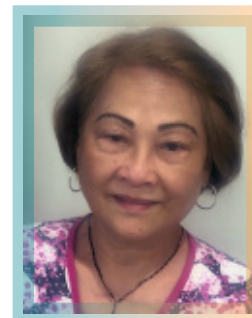
NAME	TITLE	YEARS OF SERVICE
Laurie Garber	Activity Director <b>KGH</b>	<b>46</b>
Vicenta Gestoso	Nursing Scheduler to Front Desk Receptionist <b>KGH</b>	<b>38</b>
Pacita Cervano	Certified Nursing Assistant <b>KGH</b>	<b>25</b>
Ofelia Cruz	Home Care Aide <b>BCS</b>	<b>12</b>



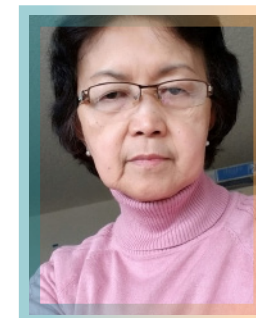
Laurie 46 years



Vicenta 38 years



Pacita 25 years



Ofelia 12 years

*Thank you*  
for your years of dedication



# VOLUNTEERS

We are deeply grateful for our incredible volunteers, whose dedication has led to unprecedented growth across Kline Galland this year. From expanding bedside and pet therapy programs to strengthening intergenerational connections, their commitment has made a lasting impact. With a remarkable increase in volunteer hours and hospice support far exceeding national standards, our volunteers continue to enrich the lives of our residents and patients, ensuring compassionate care and a stronger community.

**8,502 Hours**

*306% increase in service hours from 2023*

**253 Volunteers**

*over 115% increase from 2023*



## JOIN US

If you are interested in learning more about becoming a volunteer, please visit our website at [KlineGalland.org/Get-Involved](https://KlineGalland.org/Get-Involved) or contact:

**Jemilla Goldstein**  
Director of Volunteer Services  
[JemillaG@KlineGalland.org](mailto:JemillaG@KlineGalland.org)  
(206) 805-1930

# EXCITING THINGS IN 2024

## SCHWARTZ-ALEXANDER FUND

In 2024 we announced a new designated fund established by Debra Schwartz – the Schwartz-Alexander Unmet Needs Fund. This fund aims to address quality of life for patients by plugging the gaps sometimes left by insurance coverage for patients using Kline Galland's Home Health, Home Care and Hospice services within our Benaroya Community Services program.

## CAROLINE LEGACY SOCIETY

This past November, we had the privilege of hosting the annual Caroline Legacy Society Luncheon at the Four Seasons Hotel—a heartfelt celebration of the generosity and vision of our planned giving donors. The event featured keynote speaker Rabbi Mark Blazer, who spoke about the power of legacy and how each of us can leave a lasting impact on the world.

To become a Legacy Society member, please call (206) 456-9702.

## DENTAL CLINIC

At Kline Galland, we are committed to providing comprehensive, preventative care, which is why we remodeled and opened the Karen G. Schwartz Dental Clinic at Kline Galland Home in 2024. This state-of-the-art clinic brings essential dental services directly to our residents, removing barriers to care and ensuring they receive the treatment they need in a familiar and comfortable setting.

## PRESS CONFERENCE WITH SENATOR PATTY MURRAY

We were honored to host Senator Patty Murray and her team for a press conference highlighting the progress in reducing prescription drug prices through the Inflation Reduction Act. We are grateful for the opportunity to contribute to an impactful moment, one that directly affects seniors and families in our community.



# EMBRACING OUR FUTURE

## KLINE GALLAND'S CAPITAL CAMPAIGN FOR THE NEXT GENERATION OF CARE

For more than 110 years, Kline Galland has been a cornerstone of compassionate, dignified senior care, built on the generosity, vision, and commitment of our community. We have supported generations of families, ensuring that seniors receive the highest quality of care—whether in our facilities or in the comfort of their homes.

Today, the landscape of senior care is shifting. Costs are rising, the aging population is growing, and the resources required to sustain our mission have never been greater. Across the country, many senior care facilities are closing, leaving families with fewer options. But at Kline Galland, we are making a bold commitment—not just to remain, but to evolve, strengthen, and continue serving our community for the next 100 years and beyond.

That is why we are launching a \$30 million capital campaign—the first in over 25 years—to ensure that Kline Galland is here to serve the next generation of seniors.

*“The capital campaign allows Kline Galland to be sustainable, relevant, and prepared for the rapidly changing world of senior care while remaining a top-tier organization.”*

Brian Quint,  
Capital Campaign Co-Chair

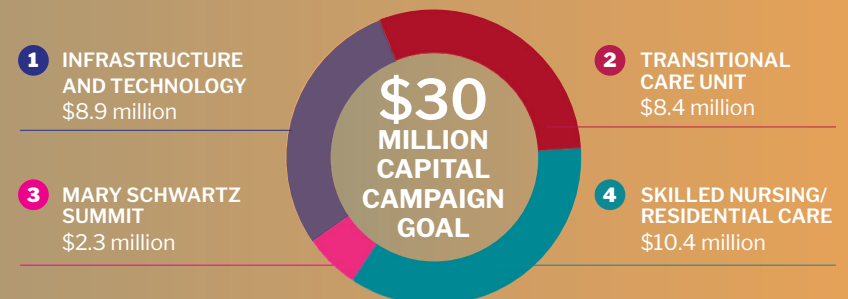
## A COMMITMENT TO THE NEXT 100 YEARS

Kline Galland has always been more than a senior care provider—we are a trusted resource for families navigating the challenges of aging. Whether it's short-term rehabilitation, long-term care, or in-home support, our goal is to ensure that every senior receives the highest level of care in a setting that meets their needs, wherever they are.

With demand for senior services growing and the landscape of healthcare evolving, this campaign is a necessary investment in the future. It will allow us to strengthen our infrastructure and expand services to ensure we can continue providing the same high-quality, compassionate care that has defined Kline Galland for over a century.



Through this campaign, we are making a significant investment in four critical areas to elevate the care and services we provide:





# TOGETHER, WE CAN MAKE IT HAPPEN

We are profoundly grateful for our early supporters, whose generosity has already helped lay the foundation for this campaign. Because of you, seniors in our community continue to receive the dignity, care, and comfort they deserve. But there is still more to do.



Kline Galland was founded on the belief that caring for our elders is a responsibility we all share. Now, we invite our entire community to join us in shaping the future. Every contribution moves us closer to securing the next 100 years of exceptional senior care.

Together, we can ensure that when seniors and their families need us, Kline Galland will always be here.

For more information or to make a gift, please contact:

**Nate Nusbaum,**  
Chief Philanthropy Officer  
(206) 456-9702  
NateN@KlineGalland.org

## CAPITAL CAMPAIGN DONORS

### \$10M+

Gary and Karen Schwartz

### \$1M - \$9,999,999

Rebecca Benaroya

Richard and Francine Loeb

Herman & Faye Sarkowsky

Charitable Foundation

Howard and Sheri Schultz &

The Schultz Family Foundation

### \$500,000 - \$999,999

Brian and Nancy Quint

### \$100,000 - \$499,999

Anonymous

Bobbe and Jon Bridge

Edward and Pamela Bridge

Jeff and Betsy Cohen

Arlene Ehrlich

Barry and Suzanne Goren

The Rind Family Foundation:

Bradley Rind and Janet Gray,

Sherry Rind, David and Celeste

Rind, Miles Rind, and the Rind

Family

Doug and Deborah Rosen

Kermit and Judy Rosen

Michele and Stan Rosen LLC

The Simon Family Charitable Trust:

Samantha, Dee, Bob Simon, and

Deborah Simon

Allan Steinman and  
Diane Sigel-Steinman

Barbara and Stuart Sulman

Alise Tarica

### \$1,000 - \$99,999

Anonymous

Emily and Aaron Alhadeff

Jack and Adina Almo

Joel and Maureen Benoliel

Victoria and David Benoliel

Marc Bridge and Julia Bonnheim

Jerry R. Cohen

Theodore z"l and Barbara Daniels

Jesse Du Bey & Orkila Capital

Richard and Lynn Du Bey

Dr. Richard and Sandra Ellenbogen

Irene and Albert Fisher

Mark and Vicci Kane

Rosanne Lapan

Rabbi James and Julie Mirel

Nate and Margaret Nusbaum

Jeff and Elysa Piha

Jay Riffkin and

Courtney Blethen Riffkin

Steve Sarkowsky and

Stacy Lawson

Elana and Joshua Zana

These gifts are comprised of donors from 2021-2025 as part of our ongoing efforts to raise funds for our Capital Campaign.

## KLINE GALLAND CAPITAL CAMPAIGN CABINET

Gary and Karen Schwartz,  
Honorary Chairs

Brian Quint,  
Campaign Cabinet Co-Chair

Joshua Gortler,  
Senior Advisor

Emily Alhadeff

Joelle Alhadeff

Jack Almo

Bobbe Bridge

Jeff Cohen

Barry Goren

Carin Jacobson

Irv Karl

Carly Kaufman

Rosanne Lapan

Tom Leavitt

Rabbi James Mirel

Doug Rosen

Robert Simon,  
KG Board Chair

Barbara Sulman

# GARY & KAREN SCHWARTZ: A LEGACY OF GIVING

Philanthropy is about more than just giving—it's about ensuring that the causes we care about continue to thrive for generations. For Karen and Gary Schwartz, their commitment to Kline Galland is deeply personal, rooted in family history and a profound respect for how the Jewish community cares for its elders.

Both Karen and Gary's ties to Kline Galland span decades. Karen's connection grew through her mother's experience as a resident, where she saw firsthand the compassionate, high-quality care that defines Kline Galland. For Gary, Kline Galland has been part of his life since childhood—growing up nearby, he watched his parents actively support the organization, with his father serving as one of the original investors in its future. Years later, he continued that legacy by joining the Board of Directors, ensuring that Kline Galland remained a pillar of Jewish senior care in Seattle.

In 2024, Karen and Gary made a transformational \$10 million gift to the Campaign for the Next Generation of Care—the

largest donation in our history. Their generosity is not just an investment in providing the highest standard of care today; it's a commitment to securing the future of Jewish senior care for generations to come.

***“Because of Kline Galland's care and the services they provide, it's very important that this organization does not fall by the wayside. We need to help ensure the Kline Galland future.”***

**-Gary Schwartz**

For Gary and Karen, Kline Galland represents something far greater than just senior care—it is an example of Jewish values in action. Kline Galland has always been rooted in the tradition of honoring and caring for elders. For these reasons, our organization is proud to have Gary and Karen serve as honorary chairs for our Capital Campaign.

With people living longer and senior care needs evolving, Kline Galland has expanded services to meet seniors where they are. But with a facility in need of updates and an increasing demand, investment is critical.

The Schwartz's \$10 million gift helps ensure Kline Galland can focus on the future and allows us to renovate and modernize our facility, ensuring that we can continue providing the highest level of care for generations to come.

***“When you have the ability to give, you have a responsibility to ensure your support makes the greatest impact. Kline Galland is an organization that truly utilizes every dollar wisely and appreciates every gift, ensuring that contributions directly enhance the lives of those in their care.”***

**-Karen Schwartz**

We are deeply grateful to Karen and Gary Schwartz for their incredible generosity. Their gift is more than an investment—it's an inspiration, a call to lead by example in caring for our community's most vulnerable. At Kline Galland, giving isn't just about today—it's about ensuring every senior receives the dignity, care, and respect they deserve, now and always.



Gary and Karen Schwartz, Honorary Chairs  
of the Kline Galland Capital Campaign



# MOTHER'S DAY CELEBRATION

Mother's Day is a beloved tradition at Kline Galland, one that brings joy and warmth to many of our residents who are mothers, grandmothers, and great-grandmothers.

Thanks to our wonderful sponsors in 2024, who helped us exceed our fundraising goal of \$110,000. In addition to creating a wonderful celebration for our mothers and grandmothers, donations supported funding for programs and services that ensure the highest quality of care for seniors in our community. We are deeply grateful for your support.



## DONORS

### GARDENIA

Edward and Pam Bridge  
Marc Bridge and Julia Bonnheim  
Lane Powell PC  
Chai and Joy Mann

### ORCHID

Alphagraphics Seattle  
DaisyHause Design  
GLY Construction  
Goldman Sachs  
Andrea Selig and Joel Erlitz

### HYDRANGEA

C+C Inc  
Steve and Gina Dichter  
Johnson Kendall Johnson Inc  
Mark and Vicci Kane  
The Lott Foundation  
Puget Sound Pipe & Supply and the Stratiner & Lewis Families  
Bob Simon & The Simon Family Charitable Trust

### TULIP

Anonymous (2)  
David V. and Mary Alhadeff  
John and Kelli Bernhard  
Charities Aid Foundation  
Clark Nuber  
Jeff and Betsy Cohen  
Victor and Judith De Leon  
Mark and Michele Eaton  
Doug and Marilyn Evans

Goldbloom Wealth Management  
MatrixCare  
Nate and Margaret Nusbaum  
Andrew and Carin Parcel  
Jack Pariser, Sandy King, & The Pariser Family  
Alan and Leslie Rosen  
David Sellers and Jennifer Finnell  
Adam Shapiro and Jessica Goldman  
Malcolm Stirton  
Wise Hospice Options

### DAISY

Anonymous (2)  
Kenneth Aaron  
Paul and Andrea Blustein  
Richard and Janet Brashen  
Lynne Chafetz and Bradley Hampton  
Bruce Fillinger and Barry Foster  
Jan Gelman and Rita Gelman  
Bruce & Joanne Glant  
Marsha Jacobs & Family and Access Unlimited  
JP Morgan Chase & Co  
Frank and Priscilla Lioe  
Brian and Nancy Quint & the Quint Family  
Gary and Cindy Stratiner  
Alan and Kim Waldbaum  
Doug and Marcia Wiviott  
Kwei and Fuk Wong

### CARNATION

Anonymous (8)  
Stephen and Esther Abouaf  
Steven and Diana Altchech  
Robin Aronson  
Marvin Behar  
Benevity Community Impact Fund  
Daniel and Linda Bledsoe  
Steve and Linda Condiotty  
David and Renee Coppel  
Indy and Cheryl Crowley  
Trea and Benjamin Diamant  
Electrocom  
Ronald Butler and Karen Ellentuck  
Irene and Albert Fisher  
Anatoly and Margarita German  
Bruce and Joanne Glant  
Thomas and Donna Gray  
Leah and Jesse Jassny  
Laura-Lee Fineman Karp  
Jennifer Kelly  
Marissa and Aaron Kraft  
Harvey and Beatrice Kriloff  
Larry Lemchen  
Jeff and Andrea Levy  
Nancy and Aaron Lichter  
Mychele Lindvall  
Vladislav Plitman and Zhanna Loyeva  
Sally Maimon  
Hilary Maler

A very special note of gratitude to Marc Bridge, Mother's Day Chair, for his exceptional leadership.

Robert Malin  
Michelle Molan  
Zack Mosner and Patricia Friedman  
Joe Ohashi  
Joan Okrent  
Bruce Peterson and Carole Aaron  
Richard z"l and Esther Robinson  
Gina Rose  
Billy and Brittney Ruiz  
Guillermo and Kathy Ruiz  
Gavriella Schuster, and Joshua and Evana Gerstman  
Daniel and Susan Shames  
Jacqueline Siegel  
Samuel Slonim  
Dr. Debra Vilinsky and Dr. Michael Sopher  
Marvin Stern and Amy Wasser  
Ellen and Mark Stone  
Jonathan and Stacie Stutz and Family  
Rodney and Nina Waldbaum  
Susan Waldbaum  
Marshall Weinberg  
Wah and Lisa Wong  
Sachiko Yari-Doty and Travis Doty  
Josh and Kathy Yeyni



# UNVEILING THE QUINT FAMILY SENSORY GARDEN

At Kline Galland, we strive to provide outstanding care by creating environments that inspire and heal. Our new sensory garden, generously funded by the Quint Family, is a testament to this commitment, offering a therapeutic space for residents, patients, staff and families to connect with nature.

In August of 2024, we celebrated the Quint Family's incredible contribution with a dedication event featuring heartfelt speeches, music, food and community.

*"After three generations of visiting loved ones at Kline Galland, naming the sensory garden in honor of our parents and grandparents felt like the perfect legacy," shared Brian and Nancy Quint.*

Designed by Professor Daniel Winterbottom and the UW Department of Landscape Architecture students, the garden incorporates elements that engage the senses—fragrant plants, textured surfaces, soothing sounds—tailored to delight our community.

To enjoy the garden, residents can take mindful walks, explore textures and fragrances, or simply relax in its peaceful setting.

The Quint Family Sensory Garden is more than a beautiful space, it's a gift that enriches lives, strengthens community and promotes health. We're grateful to the Quint Family and UW for making this vision a reality.



# THANK YOU TO OUR ANNUAL FUND DONORS AND SUPPORTERS

The generosity of our supporters is what powers the multitude of ways in which Kline Galland makes a difference in our community every day. Thank you to all of our donors and supporters who help make this work possible each year.

## 2024 DONORS

### \$10M+

Gary and Karen Schwartz

### \$1M-\$9,999,999

Rebecca Benaroya

### \$250,000-\$999,999

Brian and Nancy Quint  
The Simon Family Charitable Trust: Samantha, Dee, Bob Simon and Deborah Simon  
Howard and Sheri Schultz & The Schultz Family Foundation

### \$100,000-\$249,999

Anonymous  
Barry and Suzanne Goren  
The Estate of Marian Loewy  
Kermit and Judy Rosen

Michele and Stan Rosen LLC

Debra Schwartz  
Allan Steinman and Diane Sigel-Steinman  
Alise Tarica

### \$25,000-\$99,999

Joyce Benezra  
Jeff and Betsy Cohen  
The Richard & Francine Loeb Family Foundation  
Inge Marcus & The Hal Marcus Designated Fund at the Jewish Federation of Greater Seattle  
Nate and Margaret Nusbaum  
Steven Sarkowsky and Stacy Lawson  
Barbara and Stuart Sulman  
The Estate of David E. Tarica  
Elana and Joshua Zana

### \$10,000-\$24,999

Anonymous(4)  
The Ike Alhadeff Memorial Fund  
Jeanie Alhadeff  
Marc Bridge and Julia Bonnheim  
The Dorsey & Whitney Foundation  
Richard and Lynn Du Bey  
Irene and Albert Fisher  
James z"l and Leatrice Keller  
The Mark Litt Family Donor-Advised Fund  
Orkila Capital and Jesse Du Bey  
The Sidney Pinch Fund  
Janice Quint and Alan Soble z"l  
Jay Riffkin and Courtney Blethen Riffkin  
The Rita and Herbert Rosen Family Foundation

The Shemanski  
Trust Fund  
The George &  
Stephanie Suddock  
Foundation  
The Leon Uziel  
Memorial Fund  
Michael and  
Elaine Weinstein  
Ruth Wilkoff

### **\$5,000-\$9,999**

The Eugene &  
Ruth Freedman  
Family Foundation  
The Estate of  
Dora Frost Fass &  
The Frost Family  
The David &  
Amy Fulton  
Foundation  
Sonny and  
Gena Gorasht  
Dr. Thomas  
Hatsukami and  
Dr. Kathleen Sie  
David and  
Camille Jassny  
Mark and Vicci Kane  
The Keller Family  
Foundation  
Price Philanthropies  
Herbert and  
Lucy Pruzan & the  
Pruzan Foundation  
Steven and  
Pamela Schwartz  
Jerry and  
Mauricia Spring  
Cindy and  
Mahesh Thapa

### **\$1,000-\$4,999**

Anonymous(9)  
Karen Adler  
Jack and  
Adina Almo  
Karen Appelman  
Joel and  
Amy Arensberg  
David and  
Terry Azose  
Joseph and  
Karyn Barer  
Robert and  
Roberta Baronsky  
Lynne Behar  
David and  
Victoria Benoliel  
Leonard Berman  
and Louise  
Chiprut Berman  
Ronald Bosi  
Mark z"l and  
Terry Brashem  
Richard and  
Janet Brashen  
Richard and  
Marilyn Brody  
Daniel Chirot  
Glenn and  
Dianne Colville  
Jerry Dunietz and  
Laurie Minsk  
Lewis and  
Susan Edelheit  
Peter and  
Aranca Ehrenwald  
Joel Erlitz  
Doug and  
Marilyn Evans  
Dr. Gary and  
Linda Feldman  
Bruce Fillinger and  
Barry Foster

The Raymond  
Frankel Foundation  
Daniel and  
Myra Friedman  
Richard and  
Barrie Galanti  
The Joseph Gann &  
Rae Gann  
Charitable  
Foundation  
Bruce and  
Elaine Goldstein  
Miriam Gray  
Stanley z"l and  
Berthe Habib  
Diane Hanson  
Dr. Tom and  
Joann Hornsten  
The Kaleidoscope  
Foundation  
Irv and Laura Karl  
Bruce and  
Suzanne Katsman  
Dr. Ralph and  
Lisa Katsman  
Ronald Kessler  
Dr. Leslie and  
Denise Klaff  
Ron and  
Cherie Klein  
Andrea Kline  
Daniel and  
Sandra Kraus  
Robert and  
Janet Lackman  
Susanna Lane  
Marguerite Lewis  
Howard and  
Cathy Lowen  
Jennifer Malakoff  
Carol Masnik  
Vera Metz  
Robert and  
Pamela Miller

Elizabeth J. Miller  
Geraldyn  
Mirante-Marley  
Michael and  
Linda Morgan  
Jack and  
Dorothy Muscatel  
Kit and  
Sally Narodick  
Carole Pearl  
Marcos and  
Susan Policar  
Billy and Ricca Poll  
Rebecca  
Polyakovsky  
William and  
Karen Robins  
Dr. James and  
Vivian Rosenwald  
Saundra Rousso  
Shelly Ryan  
Michael and  
Jo Anne Sandler  
Michael and  
Henrika Sandorffy  
Ruth and  
Garry Schneider  
The Seattle  
Sephardic  
Brotherhood  
Dr. Peter Shapiro  
and Diane Aboulafia  
Arlene Sidell Cohen  
Maria and  
Michael Silvers  
Cathy Simon and  
Arthur Kaufman  
Barry Steinberg  
Marvin Strasburg  
Judith Strong  
Dr. Melvin and  
Leena Sturman  
Herbert and  
Isabel Stusser

Dr. Alex Sytman  
The Tacoma Jewish  
Community Fund  
United Way of  
King County  
Eldon and  
Carolyn Wexler  
Terry and  
Marcie Wirth  
Marianne Wolff

### **\$18 - \$999**

Anonymous(50)  
Barry Aaronson and  
Susan Marshall  
Stephen and  
Esther Abouaf  
Joseph Adatto  
Sam and  
Karen Adatto  
The Akiva Family  
Fund  
Kathy Alexander  
Lewis Alexander and  
Ayelet Gamliel  
Aziz Alfi  
Emily and  
Aaron Alhadeff  
Rochelle Alhadeff  
Robert Alkana  
Dave and  
Sandra Altaras  
Dean and  
Gigi Altaras  
Mary Altchech  
Larry and  
Anita Altose  
Albie and  
Selma Amon  
Jeffrey and  
Dalia Amon  
Faye Anschell  
Gloria Aronson  
Robin Aronson

Lawrence and  
Marcia Asher  
Robin and Tim Asher  
Bruce and  
Carol Backer  
Dr. Mark and  
Ruth Balter  
Kathie Barokas  
Sue Barrett  
Keith and  
Jo-Anne Bartlett  
Joan Baskin  
Joel Beckerman  
Diane Behar  
Marvin Behar  
Norman and  
Lisa Behar  
Rena and  
Dana Behar  
Donna Benaroya  
Helene Bender  
Norlene Benezra  
Mark and  
Judy Benjamin  
Larry and  
Shelley Bensussen  
Louis Berg  
Diane Berger  
Michael Berman  
and Terri Buysse  
Rae Bernstein  
Shirley Bernstein  
Irving and  
Luann Bertram  
Bernice Bloch  
Thelma Block  
Cheri Bloom  
David and  
Vivian Blum  
Paul and  
Andrea Blustein  
Janine Boher

Marc and Leah Boman  
Douglas Bowden  
M. Brashem Inc  
Steen and Rebecca Bratner  
Florence Breiger  
Dr. Ted Bridge  
Marilyn Broches  
Sidney and Kathy Brockman  
Robert and Sharon Brown  
Perry Bryant  
Dr. Fillmore Buckner z"l  
Karen Burdick  
Steven and Marlene Burns  
Ronald Butler and Karen Ellentuck  
Michelle Cabrera  
Barbara Calvo z"l  
Jack and Sharlene Calvo  
Ellie Capeloto  
Dr. Charles and Marilyn Caplan  
John and Janice Casserd  
Fred z"l and Rochelle Casserd  
Douglas Cheng  
Vinaya Chepuri and Melanie Field  
Ida R. Chernin  
Cathe Clapp  
Phyllis Clurman  
Harold and Penelope Coe  
Donald and Linda Cohan  
Donald and Barbara Cohen

Judith Cohen  
Sidney and Francine Cohen  
Barry and Jackie Cohn  
Joel Cohn and Mary Cropley  
Steven Cohn and Carol McCready-Cohn  
David and Renee Coppel  
Dr. Marc Cordova  
Jack Cordova  
Jeff and Andrea Cordova  
Jane Cotler  
Flora Coughlin  
Barbara J. Cox  
Peter z"l and Esther Damm  
Izyaslav Darakhovskiy  
Charles Davis  
Lilly De Jaen  
Michael and Peggy Deleon  
Dr. William Dershowitz  
Harold Diamond  
Stuart Dick  
The Moe & Myra Dinner Memorial Fund  
Esther Druxman  
Dr. David and Peggy Dunner  
Beverly Eastern  
Sam and Sharon Eastern  
Jean Edelhertz  
Ruth Egger  
Thomas and Sandra Eichbaum

David and Sarah Eitelbach  
Shmuel El-Ad and Patricia Emmons  
The Engelstein Family Foundation  
Robert and Karen Epstein  
Dr. Marc and Maria Erlitz  
Jeff and Janet Esfeld  
Lea Eskenazi  
Linda Eskenazi  
Martin Eskenazi and Madeleine Balgley  
Sol Eskenazi  
Gary and Sandra Etlinger  
David and Lisa Fain  
Steven and Dena Fantle  
Steven and Fran Farber  
Ruth Fast  
Alfreda Feinberg z"l  
Dr. Jerry and Laurie Feinberg  
David Feinman  
Eric Feldman and Susan Folk  
Barbara Fernandez  
Moshe and Sherry Feuer  
Annette Fisher  
Michael and Rhonda Forman  
Sally and Lee Fouché  
Rabbi Bernard and Shirley Fox  
Rona Frances  
Toby Franco

Alan and Linda Freyd  
Terry Friedlander and Robin Leavitt  
Candace and Daniel Friedman  
Dennis and Ellen Friedman  
Eli and Karen Friedman  
Judith Friedman  
Henry and Sandra Friedman  
Richard Fruchter and Patricia Breen  
Stanley Gartler  
Gail Gensler  
Judy Ginther  
Edythe A. Gissing  
Bruce and Joanne Glant  
Melvin Glazer  
Barbara Glicksberg  
Michael Gluck and Lisa Koper  
Leslie Gold  
Michael J. Goldberg  
Robert and Carole Goldberg  
Yefim and Rose Goldenberg  
Royal and Kristine Goldfarb  
Sally Goldgeier z"l  
Arthur and Susan Goldman  
Dr. Richard and Ginger Goldman  
Barry Goldstein and Marian Schwartz  
Pamela Goral  
Richard Gordon

Robert and Pamela Gordon  
Joshua and Sarah Gortler  
Lynn Gottlieb  
Irving and Reesa Gottschalk  
Barbara Grashin  
The Bertha & Samuel Green Memorial Fund  
Dr. Martin Greene  
Joseph z"l and Lila Greengard  
Sue Gregory  
Merle P. Griff and Nadine Griff Mack  
Jeanette Haggland  
Aaron Halabe and Judy Edelstein  
Paul and Judy Hall  
Diane Hamlin  
Setsuko Harada  
Andrew and Carol Harris  
Sanford Hausman  
Sylvia Hayden  
Mary Hegdahl  
Dr. Jacob L. Heller  
Patricia Hellwig  
Selma Hemmat  
Cynthia Hemphill  
Larry and Diane Herman  
Michael and Kelly Hershey  
John Hirschel  
Anne Hirschhorn  
William Hochberg  
Mark Hoffman  
Esther Holcenberg

Constance Hoover and Harris Hinnant  
Steve and Desiree Hoover  
Leann and Edwin Hopwood  
Russell and Melonee Horowitz  
Gerry Huppin  
Ralph Jackson  
Gayle Jacobs and Cheryl Glenn  
Stuart and Sandra Jacobson  
Rose Lee Jaffe  
Robert and Terri Jambor  
Larry and Janet Jassen  
Jonelle Johnson  
Dr. Philip Juno  
Robert Kalina  
David and Mary Kantor  
Elaine Kantor  
Vera Kantor  
Dr. Gary and Wendy Kaplan  
Robert Kaplan and Margaret Levi  
Janice Kaplan-Klein  
Charles and Betsy Kapner  
Raphael and Shira Katsman  
Diane Katz  
Steve Katz  
Stuart Kaufman and Sheryl Begoun  
Elliott Kavesh  
Cynthia Kelley  
Nancy and Bill Kershner



Patti Kieval  
 Karen Kilian  
 Marion Kitz  
 Allen Klein  
 Cindy Klettke  
 Randy and  
 Laurie Koehler  
 Allison Kollack  
 Mike and  
 Shari Koppel  
 Allen Kosin  
 Louis Kotler and  
 Phyllis Levy  
 John Koza  
 Harvey and  
 Beatrice Kriloff  
 Allan Kutoff  
 Loretta Kuznetz  
 Beth and Allan Las  
 Ellen Laschansky  
 Rita Lawson  
 Bessie Leavitt  
 Maggie Leavitt-Kite  
 Joshua Leblang  
 Michael LeFevre  
 and Selena Shelley  
 Margaret Lemberg  
 Sue Lentz  
 Norman and  
 Penny Leopold  
 Rosa Leung  
 Andy and  
 Stephanie Levine  
 Mark Levine and  
 John Keppeler  
 Joey Levy  
 Michael and  
 Cheri Levy  
 Dr. Bryan and  
 Carol Leyton  
 Frank and  
 Judy Lippman

Robert Lipson and  
 Sharon Kean  
 John and  
 Paula Loewy  
 Jacqueline Loran  
 Robert Lowe and  
 Janet Reis  
 Cheryl and Sam Lu  
 Carin Mack  
 David Mack  
 Dr. Michael and  
 Karin Madwed  
 Sally Maimon  
 Hilary Maler  
 Robert Malin  
 Sandy Marks  
 Debi Markus  
 Brian and  
 Janet Masuo  
 Leigh Matukonis z"l  
 Janet McInerney  
 Lee Meadows and  
 Ken Rosenthal  
 Morris Menashe  
 Rachelle Mezistrano  
 Leslie Mickel  
 Nancy Mickel  
 Adam Mihlstin and  
 Marilyn Corets  
 Dr. Michael and  
 Sarajane Milder  
 Jana O. Miller  
 Laura Miller  
 Phillip and  
 Susan Miller  
 Rabbi James and  
 Julie Mirel  
 Alan Mitchel  
 Rochelle Mitz  
 Morry z"l and  
 Mickie Mochkatel  
 Philip Molin  
 Susan Molin

Isaac Morgensztern  
 Lisa Moriguchi and  
 Jason Loui  
 Jeff Morris and  
 Joani Saran  
 Bernard Moskowitz  
 Warren and  
 Jeannie Moskowitz  
 Zack Mosner and  
 Patricia Friedman  
 Edwin and  
 Mary Mulnick  
 John and  
 Debbie Muscatel  
 Lee Naon  
 Patti Newby  
 Jean Nishi  
 Dr. Eugene and  
 Esther Normand  
 Northwest Jewish  
 Singles  
 Patricia Olson  
 Dr. Jon and  
 Ellyn Ostrow  
 Our Chavurah  
 Ruben Owen  
 Gerald and  
 Janice Owens  
 Elliot Paloy  
 Richard and  
 Bettie Panick  
 The Pariser Family  
 Trust  
 Susan Pass  
 Joy Pearl  
 Richard Peek  
 Alan and  
 Elaine Peizer  
 Gary Peltz  
 Bruce Peterson and  
 Carole Aaron  
 Jeffrey and  
 Cynthia Peterson

Amy Philipson  
 Jeff and Elysa Piha  
 David Pollart  
 Dr. Scott and  
 Karin Pollock  
 Shirley Portman  
 Nancy Potash  
 Sinai Putter  
 Robert Raphael and  
 Jennifer Naimy  
 Barbara Rappoport  
 Dr. Murray and  
 Dr. Wendy Raskind  
 Dr. Alexandra E.  
 Read  
 Edward Renner  
 Lorne and  
 Elizabeth Richmond  
 Dr. Kimberly Riehle  
 and Dr. Alexander  
 Farivar  
 Corey and  
 Bella Riley  
 Brad Rind and  
 Janet Gray  
 Michael L. Riolo  
 Arnold and  
 Miriam Robbins  
 Howard and  
 Susan Robboy  
 Eleanor Rogers  
 Michael Rogers and  
 Susan Glicksberg  
 Olivia Rose z"l  
 William and  
 Jean Rosen  
 David and  
 Karen Rosenzweig  
 Herrman Ross  
 Marc Rouso  
 Harry and  
 Cindy Rubin  
 Joan Rudd

Harmon Rulifson  
 Allen and  
 Susan Russak  
 Judy Russak  
 Marilyn Ryan  
 Claire Saliman  
 Dr. Werner and  
 Joan Samson  
 Charlotte  
 Schildkraut  
 Rosalyn Schiller  
 David and  
 Nancy Schneider  
 Sari Schneider  
 Paul Schneiderman  
 Dr. Michael and  
 Shainie Schuffler  
 Viviane and  
 Jonas Schultz  
 Nancy Schuman  
 Terri Schuster  
 Joel Schwartz  
 Michael and  
 Kandy Schwartz  
 Howard and  
 Beatrice Seelig  
 Sheila Seitz  
 Ronn and  
 Linda Seligman  
 Larry Sellers and  
 Beatrice Von Ville  
 Kenneth Shagara  
 Constance Shain  
 Steven and  
 Wendy Shain  
 Daniel and  
 Susan Shames  
 David and  
 Roni Shapiro  
 Joanne Shapiro  
 Marvin and  
 Suzanne Sherman  
 Naomi Shiff

Linda and  
 Ed Shimizu  
 Neil and  
 Rolanda Shiosaki  
 Sydney Shore  
 Dr. Stuart and  
 Judith Shorr  
 Ronnie Shure and  
 Toby Harris  
 Alan and  
 Carol Sidell  
 Hilda Siderman  
 Jacqueline Siegel  
 Lisa Siegel  
 Ralph and  
 Alicia Siegel  
 Eugene Silberberg  
 Dr. Donald and  
 Goldie Silverman  
 Lawrence  
 Silverman  
 Herbert Simon  
 Jan Simon  
 Frieda Sion  
 Steven Sitcov  
 Justin and  
 Heather Slack  
 Marc and  
 Kay Slonim  
 David Slotnick  
 Gary Slotnik  
 Dr. Robert Small and  
 Stephanie Weil  
 William and  
 Janet Snyder  
 Drs. Debra Vilinsky  
 and Michael Sopher  
 Stan Sorscher and  
 Judy Arms  
 Olivia M. Sroufe  
 Roger and  
 Amy Stegman

Richard and  
Carolyn Stein  
Sylvia Stern  
Barbara Sternoff  
David and  
Joy Stiefel  
Dr. Doris Stiefel  
Mark and  
Sheryl Stiefel  
Jon Stoloff and  
Carol Sacks  
Bonnie Stone  
Gary and  
Cindy Stratiner  
Stanley Sussman  
and Geraldine  
Friend  
The Swope Giving  
Fund  
Mary Tacher  
Steve and  
Laurie Talkington  
Kristina  
Tarczy-Hornoch  
and James Kirby  
Frieda Taub  
Dr. Carol Teitz  
Alan and  
Michele Tesler  
Robert and  
Romani Thaler  
TisBest  
Philanthropy

Brian Tobin  
Noah Tratt and  
Daphne Minkoff  
Reva Turtel  
United Way of Salt  
Lake  
Rachel Vaillancourt  
Harold Vhugen  
Ronald and  
Toni Waldbaum  
Norman and  
Barbara Walker  
Tony and  
Lynn Wartnik  
Hans and  
Sharon Wehl  
Cheryl Weight  
Marshall Weinberg  
Kathleen and  
Allen Weiner  
Marianne  
Weingarten  
Thomas  
Weingarten and  
Wendy Thon  
Richard and  
Laurie Weinman  
Alan Weinstein and  
Susan Amira-  
Weinstein  
Steve Weinstein  
William Weinstein

Marvin and  
Karen Weiss  
Richard and  
Susan Werbin  
Dr. Melvin Wilenzick  
David Williams  
Doug and  
Marcia Wiviott  
Michael and  
Marcia Wiviott  
Edward and  
Judy Wolf  
Florence Wuethrich  
Vicki Yamamoto  
and Lori O'Toole  
Sandra Yee  
Harry Yoshimura  
Ritsuko Yoshino  
Karen Zak  
Shirley Zarkin  
Dr. Stanley and  
Nancy Zeitz  
Diane and  
Scott Ziegler  
Rebecca  
Zimmerman

---

Please note that pledge payments are recognized in our annual giving report in the year the pledge is made.

**If we have omitted or incorrectly listed your name, please accept our heartfelt apology and know that your service is greatly appreciated.**

